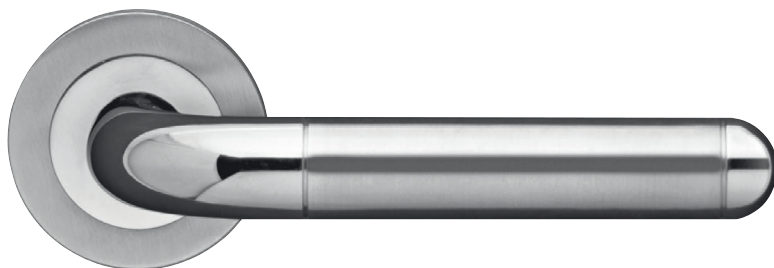


Tear Sheet for Mortise set
 Model Lignano Steel on rose by KARCHER DESIGN



contact our US office
 Karcher Design USA
 Tukwila, Seattle
 +1 844 858 2033
 order@karcher-design.com



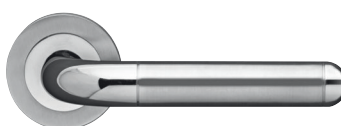
Lignano Steel

Finish: polished/satin stainless steel (73)

Lignano Steel on Rose, special door prep required



Lignano Steel- TER 35Q
 2 1/16" x 2 1/16"



Lignano Steel- TER 35
 Ø 2 1/16" x 7/16"

Features TER35Q and TER35

- 3 piece rose
- concealed bolt-through fixing
- sprung
- door range 1 1/2" (38 mm) - 1 7/8" (48 mm) standard
- stainless steel faceplate
- Accurate UL Listed Mortise Lock
- available with UL-Latch
- rate of satin stainless steel 304
- hub 5/16" (8 mm)
- available finish: polished/satin stainless steel, satin stainless steel, polished/satin zirconium

Product code Mortise set square

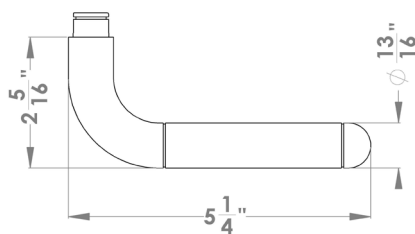
TER35Q PRI 9139 73	Accurate privacy without cylinder
TER35Q STORE 9195 73	Accurate storeroom/nitelatch
TER35Q ENT 9167 73	Accurate entrance set without cylinder
TER35Q ENT 9169 73	Accurate entrance set without cylinder
UEZ1340 CC 73	cylinder color
UEZ1340 TT 73	thumbturn
UEZ1340 BAD 73	privacy thumbturn

round

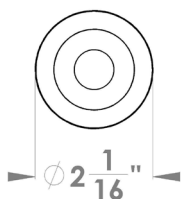
TER35 PRI 9139 73	Accurate privacy without cylinder
TER35 STORE 9195 73	Accurate storeroom/nitelatch
TER35 ENT 9167 73	Accurate entrance set without cylinder
TER35 ENT 9169 73	Accurate entrance set without cylinder
UEZ1332 CC 73	cylinder color
UEZ1332 TT 73	thumbturn
UEZ1332 BAD 73	privacy thumbturn

specification details

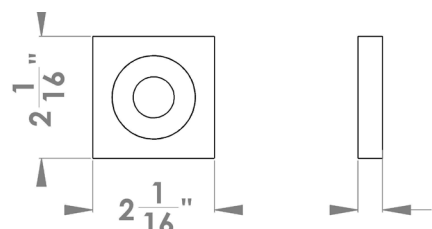
lever



round rose



square rose



Please note: Karcher Design products are designed and measured in metric. Imperial measurements are close approximations to the actual metric dimensions