

Tear Sheet for Mortise set
Model Rhodos on rose by KARCHER DESIGN



contact our US office
Karcher Design USA
Tukwila, Seattle
+1 844 858 2033
order@karcher-design.com



Rhodos

Finish: Satin stainless steel (71)

Rhodos on Rose, special door prep required



Rhodos- TER 28Q
2 1/16" x 2 1/16"



Rhodos- TER 28
Ø 2 1/16" x 7/16"

Features TER28Q and TER28

- 3 piece rose
- concealed bolt-through fixing
- sprung
- door range 1 1/2" (38 mm) - 1 7/8" (48 mm) standard
- stainless steel faceplate
- Accurate UL Listed Mortise Lock
- available with UL-Latch
- rate of satin stainless steel 304
- hub 5/16" (8 mm)
- available finish: satin stainless steel, polished stainless steel, oil rubbed bronze

Product code Mortise set square

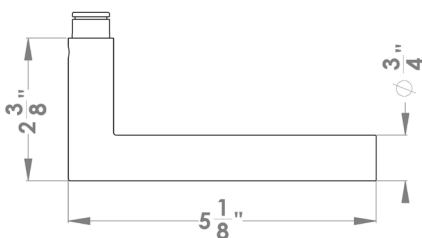
TER28Q PRI 9139 71	Accurate privacy without cylinder
TER28Q STORE 9195 71	Accurate storeroom/nitelatch
TER28Q ENT 9167 71	Accurate entrance set without cylinder
TER28Q ENT 9169 71	Accurate entrance set without cylinder
UEZ1340 CC 71	cylinder colar
UEZ1340 TT 71	thumbturn
UEZ1340 BAD 71	privacy thumbturn

round

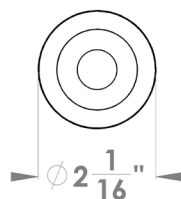
TER28 PRI 9139 71	Accurate privacy without cylinder
TER28 STORE 9195 71	Accurate storeroom/nitelatch
TER28 ENT 9167 71	Accurate entrance set without cylinder
TER28 ENT 9169 71	Accurate entrance set without cylinder
UEZ1332 CC 71	cylinder colar
UEZ1332 TT 71	thumbturn
UEZ1332 BAD 71	privacy thumbturn

specification details

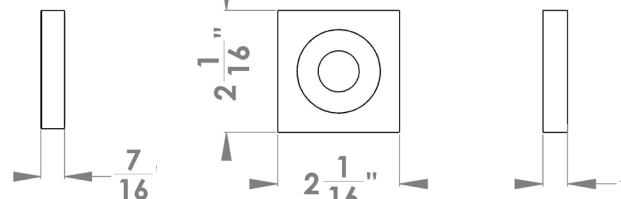
lever



round rose



square rose



Please note: Karcher Design products are designed and measured in metric. Imperial measurements are close approximations to the actual metric dimensions