



Ontario

Finish: satin stainless steel (71)

Ontario on rose, special door prep required



Ontario – TER64Q
 2 1/16" x 2 1/16"



Ontario – TER64
 Ø 2 1/16" x 7/16"

Features TER64Q and TER64

- 3 piece rose
- concealed bolt-through fixing
- sprung
- door range 1 1/2" (38 mm) - 1 7/8" (48 mm) standard
- stainless steel faceplate
- Accurate UL Listed Mortise Lock
- rate of satin stainless steel 304
- hub 5/16" (8 mm)
- available finishes: satin stainless steel, satin/polished stainless steel

product code

square

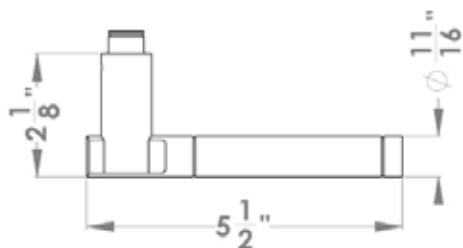
TER14Q PRI 9139 71	Accurate privacy without cylinder
TER14Q STORE 9195 71	Accurate storeroom/nitelatch
TER14Q ENT 9167 71	Accurate entrance set; cylinder not included
TER14Q ENT 9169 71	Accurate entrance set; cylinder not included
UEZ1340 CC 71	cylinder collar
UEZ1340 TT 71	thumbturn
UEZ1340 BAD 71	privacy thumbturn

round

TER14 PRI 9139 71	Accurate privacy without cylinder
TER14 STORE 9195 71	Accurate storeroom/nitelatch
TER14 ENT 9167 71	Accurate entrance set; cylinder not included
TER14 ENT 9169 71	Accurate entrance set; cylinder not included
UEZ1332 CC 71	cylinder collar
UEZ1332 TT 71	thumbturn
UEZ1332 BAD 71	privacy thumbturn

specification details

lever



round rose



square rose

