

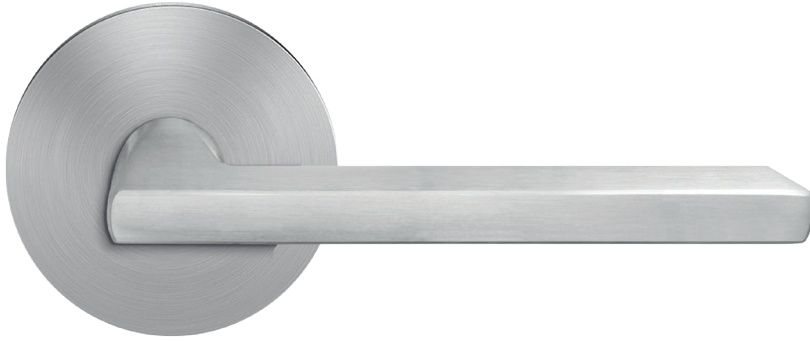
Tear Sheet
 Model Montana on rose by KARCHER DESIGN

KARCHER

DESIGN

GERMANY

contact our US office
 Karcher Design NA
 1042 Industry Dr.
 Tukwila, WA 98188
 Office: 844-858-2033
 Fax 253-236-4469
 order@karcher-design.com
 www.karcher-design.com



Montana

Finish: satin stainless steel (71)

To suit standard 2 1/8" door prep



Montana – UEPL54
 Ø 2 5/8 x 7/16"

round

UEPL54 PAS60 71	passage 2 3/8" backset
UEPL54 PAS70 71	passage 2 3/4" backset
UEPL54 PRI60 71	privacy 2 3/8" backset
UEPL54 PRI70 71	privacy 2 3/4" backset
UEPL54 DUM 71	full dummy
UEPL54 DUML 71	half dummy left
UEPL54 DUMR 71	half dummy right
UEDB 200 71	deadbolt to add to passage
UEDB 200 A 71	deadbolt keyed alike

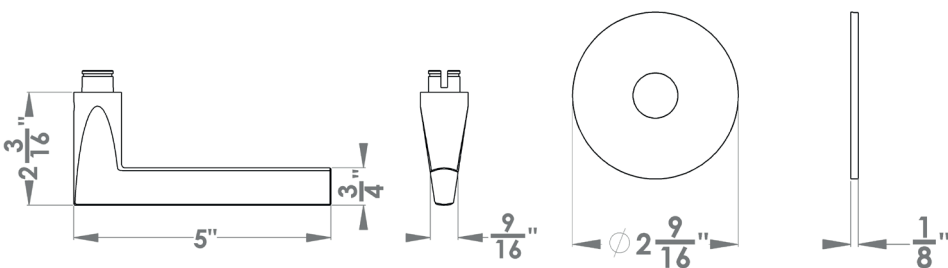
Features UEPL54

- on Plan Design rose
- concealed bolt-through fixing
- sprung
- door range 1 3/8" (35 mm) - 1 3/4 (45 mm) standard
- T- and Lip-Strike with dust box
- stainless steel faceplate
- backsets: 2 3/8" (60 mm) or 2 3/4" (70 mm)
- functions: Passage (PAS), Privacy (PRI), full dummy (DUM), dummy left (DUML), dummy right (DUMR)
- available with UL-Latch
- 28° latch with attached face plate
- rate of satin stainless steel 304
- hub 5/16" (8 mm)
- door prep 2 1/8"
- available finish: satin stainless steel, cosmos black

specification details

lever

round rose



l and measured in metric. Imperial measurements are close approximations