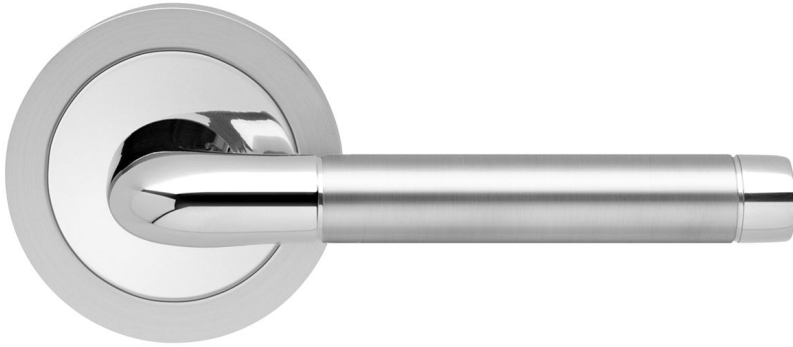


Tear Sheet
Model Babylon on rose by KARCHER DESIGN

KARCHER
DESIGN

GERMANY

contact our US office
Karcher Design USA
Tukwila, Seattle
+1 844 858 2033
order@karcher-design.com



Babylon

Finish: polished/satin stainless steel (73)

To suit standard 2 1/8" door prep



Babylon – UER 32Q
2 5/8 x 2 5/8 x 7/16"



Babylon – UER 32
Ø 2 5/8 x 7/16"

Features UER32Q and UER32

- 3 piece rose
- concealed bolt-through fixing
- sprung
- door range 1 1/4" (31 mm) - 2" (51 mm) standard
- T- and Lip-Strike with dust box
- stainless steel faceplate
- backsets: 2 3/8" (60 mm) or 2 3/4" (70 mm)
- functions: Passage (PAS), Privacy (PRI), full dummy (DUM), dummy left (DUM L), dummy right (DUM R)
- available with UL-Latch
- 28° latch with attached face plate
- rate of satin stainless steel 304
- hub 5/16" (8 mm)
- door prep 2 1/8"
- available finish: satin/polished stainless steel

product code square

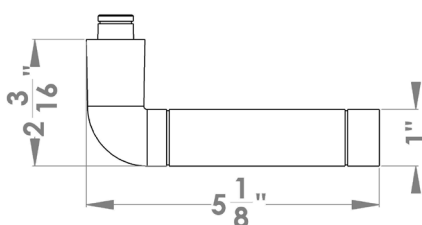
UER32Q PAS60 73	passage 2 3/8" backset
UER32Q PAS70 73	passage 2 3/4" backset
UER32Q PRI60 73	privacy 2 3/8" backset
UER32Q PRI70 73	privacy 2 3/4" backset
UER32Q DUM 73	full dummy
UER32Q DUML 73	half dummy left
UER32Q DUMR 73	half dummy right
UEDBQ 73	deadbolt to add to passage

round

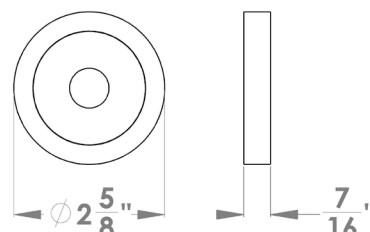
UER32 PAS60 73	passage 2 3/8" backset
UER32 PAS70 73	passage 2 3/4" backset
UER32 PRI60 73	privacy 2 3/8" backset
UER32 PRI70 73	privacy 2 3/4" backset
UER32 DUM 73	full dummy
UER32 DUML 73	half dummy left
UER32 DUMR 73	half dummy right
UEDB 73	deadbolt to add to passage
UEDBA 73	deadbolt keyed alike

specification details

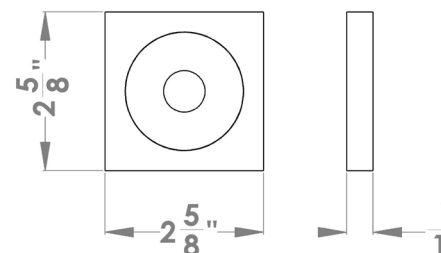
lever



round rose



square rose



Please note: Karcher Design products are designed and measured in metric. Imperial measurements are close approximations to the actual metric dimensions