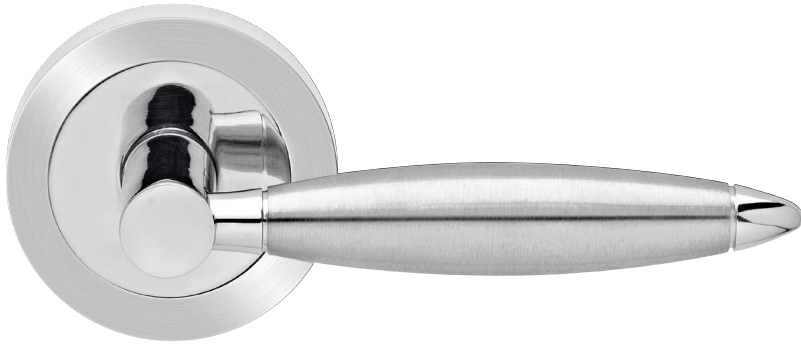


Tear Sheet
Model Cuba on rose by KARCHER DESIGN

KARCHER
DESIGN

GERMANY

contact our US office
Karcher Design USA
Tukwila, Seattle
+1 844 858 2033
order@karcher-design.com



Cuba

Finish: polished/satin stainless steel (73)

To suit standard 2 1/8" door prep



Cuba- UER 33
Ø 2 5/8 x 7/16"

product code
round

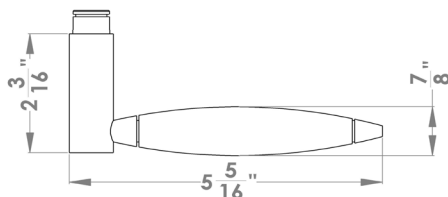
UER33 PAS60 73	passage 2 3/8" backset
UER33 PAS70 73	passage 2 3/4" backset
UER33 PRI60 73	privacy 2 3/8" backset
UER33 PRI70 73	privacy 2 3/4" backset
UER33 DUM 73	full dummy
UER33 DUML 73	half dummy left
UER33 DUMR 73	half dummy right
UEDB 73	deadbolt to add to passage
UEDBA 73	deadbolt keyed alike

Features UER33

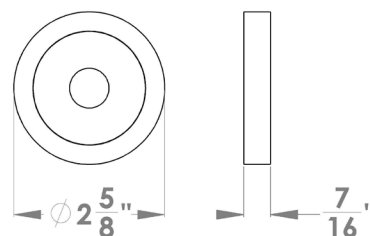
- 3 piece rose
- concealed bolt-through fixing
- sprung
- door range 1 1/4" (31 mm) - 2" (51 mm) standard
- T- and Lip-Strike with dust box
- stainless steel faceplate
- backsets: 2 3/8" (60 mm) or 2 3/4" (70 mm)
- functions: Passage (PAS), Privacy (PRI), full dummy (DUM), dummy left (DUM L), dummy right (DUM R)
- available with UL-Latch
- 28° latch with attached face plate
- rate of satin stainless steel 304
- hub 5/16" (8 mm)
- door prep 2 1/8"
- available finish: polished/satin stainless steel

specification details

lever



round rose



Please note: Karcher Design products are designed and measured in metric. Imperial measurements are close approximations to the actual metric dimensions