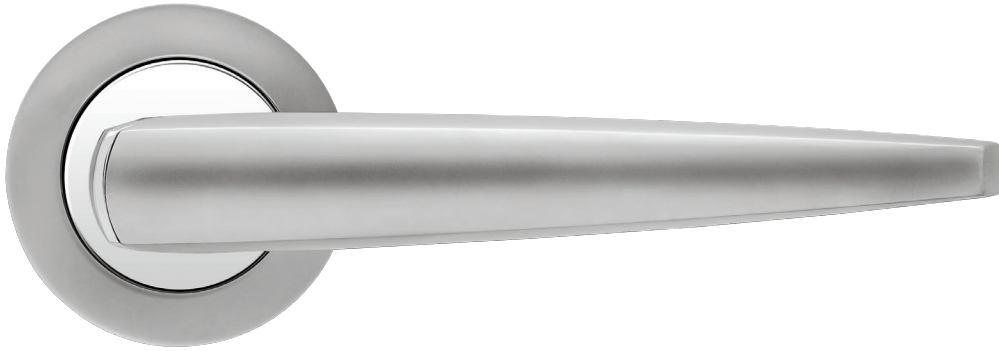


Tear Sheet  
Model Denver on rose by KARCHER DESIGN

**KARCHER**  
**DESIGN**

GERMANY

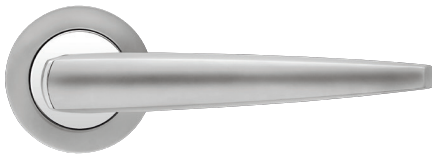
contact our US office  
Karcher Design USA  
Tukila, Seattle  
+1 844 858 2033  
order@karcher-design.com



**Denver**

Finish: chrome/satin chrome (56)

To suit standard 2 1/8" door prep



**Denver-UR 230**  
Ø 2 5/8 x 7/16"

product code  
round

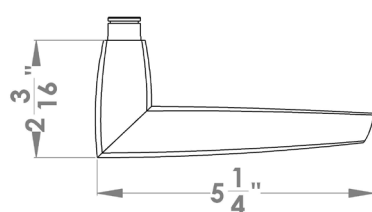
UR230 PAS60 56	
UR230 PAS70 56	passage 2 3/8" backset
UR230 PRI60 56	passage 2 3/4" backset
UR230 PRI70 56	privacy 2 3/8" backset
UR230 DUM 56	privacy 2 3/4" backset
UR230 DUM L 56	full dummy
UR230 DUM R 56	half dummy left
UEDB 73	half dummy right
UEDBA 73	deadbolt to add to passage
	deadbolt keyed alike

**Features UR230**

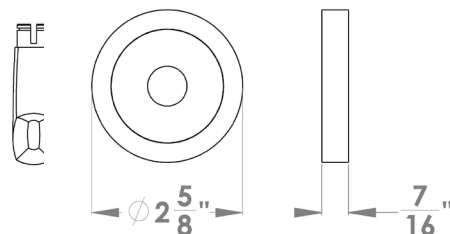
- 3 piece rose
- concealed bolt-through fixing
- sprung
- door range 1 1/4" (31 mm) - 2" (51 mm) standard
- T- and Lip-Strike ith dust box
- stainless steel faceplate
- backsets: 2 3/8" (60 mm) or 2 3/4" (70 mm)
- functions: Passage (PAS), Privacy (PRI), full dummy (DUM), dummy left (DUM L), dummy right (DUM R)
- available with UL-Latch
- 28° latch with attached face plate
- rate of satin stainless steel 304
- hub 5/16" (8 mm)
- door prep 2 1/8"
- available finish: chrome/satin chrome

**specification details**

lever



round rose



Please note: Karcher Design products are designed and measured in metric. Imperial measurements are close approximations to the actual metric dimensions