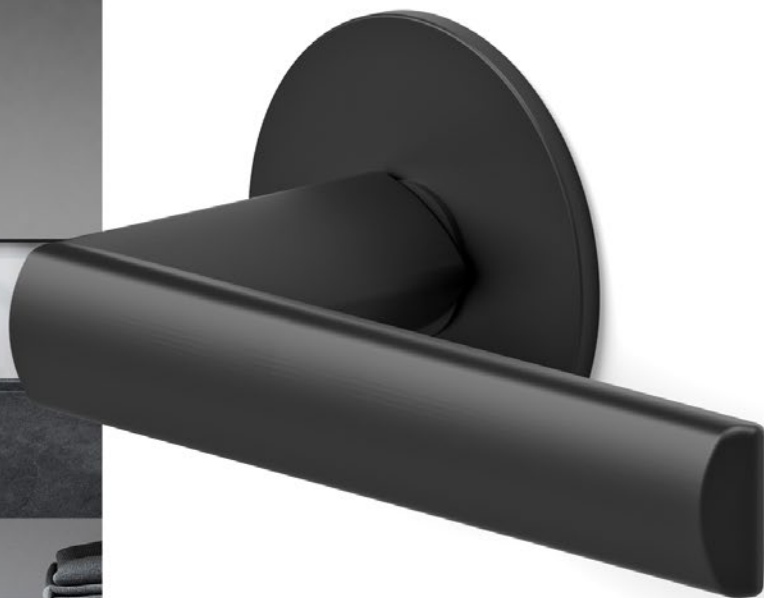


KARCHER
DESIGN
GERMANY



plan-design

DESIGNS OF STAINLESS STEEL

FLUSH AESTHETICS FOR PRE-BORED DOOR 2 1/8"



plan-design

Flowing transitions and flush aesthetics are characteristics of the Plan Design range by KARCHER DESIGN. On one level with the door, Plan Design fittings combine design with functionality.

A surface is described as plane when all points on this surface are in one layer. In this plane surface the Plan Design rose by KARCHER DESIGN sits flush. Most KARCHER DESIGN lever handles are available on thin roses.

Rhodos – UEPL28 71
satin stainless steel



Rhodos – UEPL28 71
satin stainless steel



Rhodos – UEPL28 83
cosmos black



Montana – UEPL54 71
satin stainless steel



Montana – UEPL54 83
cosmos black



Madeira – UEPL45 71
satin stainless steel



Madeira – UEPL45 83
cosmos black



Madeira – UEPL45 LS 71
satin stainless steel
black leather



Tasmania – UEPL31 71
satin stainless steel



Paris – UEPL55 71
satin stainless steel



Paris – UEPL55 83
cosmos black



Madrid – UEPL56 71
satin stainless steel



Soho – UEPL57 71
satin stainless steel

KARCHER DESIGN Plan Design roses are available in different finishes and can be mounted on $2 \frac{1}{8}$ " pre-bored doors. The UEPL and UEPLQ roses have a diameter of $2 \frac{9}{16}$ ". For further information visit www.karcher-design.com

KARCHER

DESIGN
GERMANY

PLAN IN SQUARE



Rhodos – UEPLQ28 71
satin stainless steel



Montana – UEPLQ54 71
satin stainless steel



Madeira – UEPLQ45 71
satin stainless steel



Seattle – UEPLQ46 71
satin stainless steel



Tasmania – UEPLQ31 71
satin stainless steel



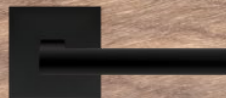
Tasmania – UEPLQ31 72
polished stainless steel



Rhodos – UEPLQ28 83
cosmos black



Montana – UEPLQ54 83
cosmos black




Madeira – UEPLQ45 83
cosmos black



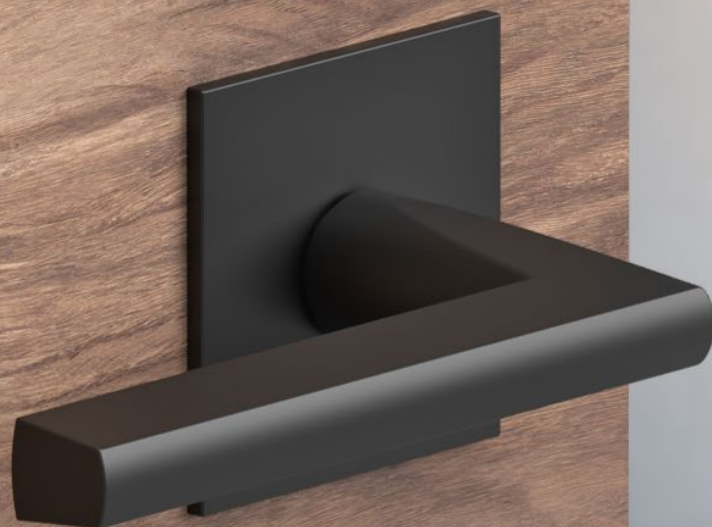
Seattle – UEPLQ46 83
cosmos black



Tasmania – UEPLQ31 83
cosmos black

Square roses with a thickness of $\frac{1}{8}$ " and concealed fixing for a unique look! Comfortable usage including 28° degree latch. All levers meet ADA accessibility requirements (ANSI A117.1) and are also available as passage for fire doors. 

FOR PRE-BORED DOOR 2 $\frac{1}{8}$ "



Montana – UEPL54Q 83
cosmos black

KARCHER

DESIGN
GERMANY

DEADBOLTS



UEDB200 71
satin stainless steel



UEDB200 83
cosmos black

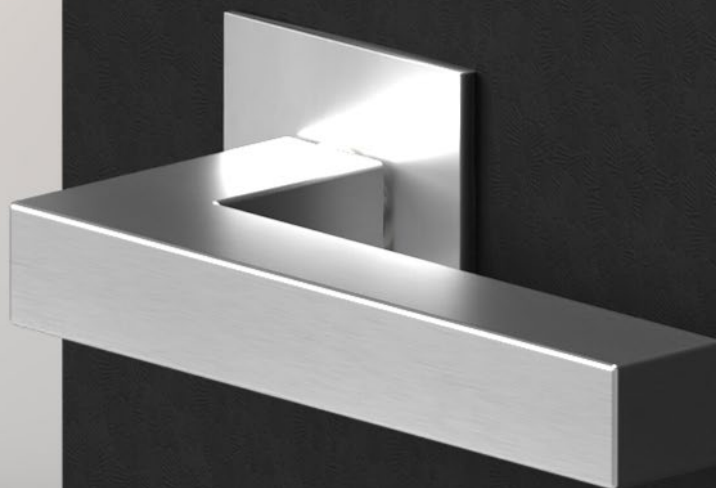


UEDBQ200 71
satin stainless steel



UEDBQ200 83
cosmos black

Matching deadbolt for
UEPL and UEPLQ series.



Seattle - EPLQ46 71
satin stainless steel

PLAN DESIGN FOR CUSTOM BORED DOOR



Rhodos – EPL28 71
satin stainless steel



Madeira – EPL45 71
satin stainless steel



Rhodos – EPL28 83
cosmos black



Madeira – EPL45 83
cosmos black



Tasmania – EPL31 71
satin stainless steel



Tower – EPL86 71
satin stainless steel



Kent – EPL96LS 71
satin stainless steel
leather black



Madeira – EPL45LD 71
satin stainless steel
leather dark brown



Montana – EPLQ54 71
satin stainless steel



Seattle – EPLQ46 71
satin stainless steel



Montana – EPLQ54 83
cosmos black



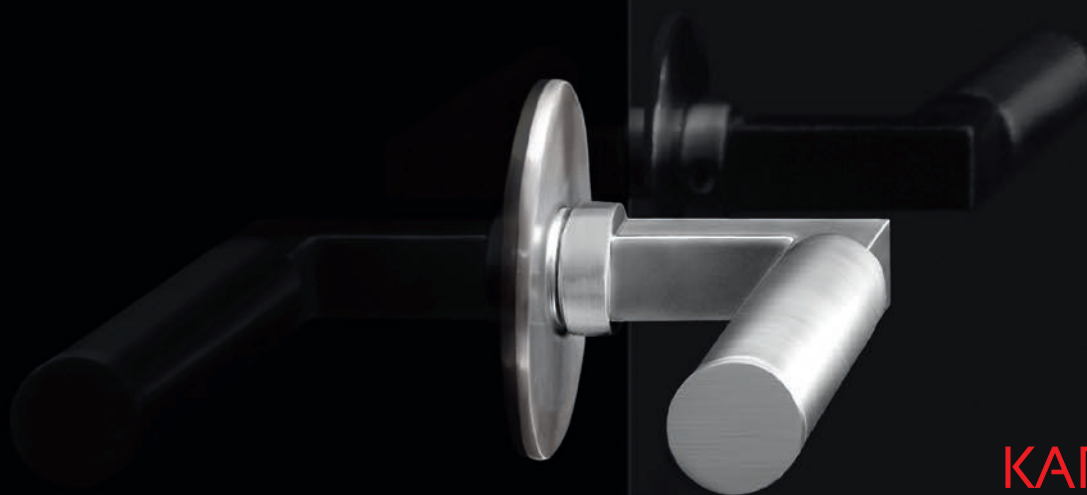
Seattle – EPLQ46 83
cosmos black

The EPL and EPLQ roses for custom bored doors have a diameter of $2 \frac{3}{16}$ ".

KARCHER
DESIGN
GERMANY

plan-design

Excellent design quality on one level is the key feature of the $\frac{1}{8}$ " thin Plan Design rose by KARCHER DESIGN.



KARCHER

DESIGN

GERMANY

Seattle Office and
Warehouse:

Karcher Design NA
1042 Industry Drive
Tukwila, WA 98188
Tel.: (844) 858-2033
Fax: (253) 236-4469
order@karcher-design.com
www.karcher-design.com

