

Tear Sheet for Mortise set  
Model Verona on rose by KARCHER DESIGN



contact our US office  
Karcher Design USA  
Tukwila, Seattle  
+1 844 858 2033  
order@karcher-design.com



**Verona**

Finish: polished/satin stainless steel (73)

**Verona on Rose, special door prep required**



**Verona- TER 37Q**  
**2 1/16" x 2 1/16"**



**Verona- TER 37**  
**Ø 2 1/16" x 7/16"**

**Features TER37Q and TER37**

- 3 piece rose
- concealed bolt-through fixing
- sprung
- door range 1 1/2" (38 mm) - 1 7/8" (48 mm) standard
- stainless steel faceplate
- Accurate UL Listed Mortise Lock
- available with UL-Latch
- rate of satin stainless steel 304
- hub 5/16" (8 mm)
- available finish: satin stainless steel, polished stainless steel, polished/satin stainless steel

**Product code Mortise set square**

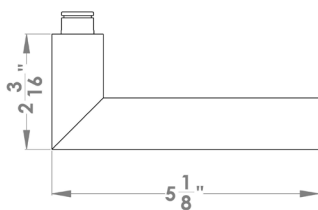
TER37Q PRI 9139 73	Accurate privacy without cylinder
TER37Q STORE 9195 73	Accurate storeroom/nitelatch
TER37Q ENT 9167 73	Accurate entrance set without cylinder
TER37Q ENT 9169 73	Accurate entrance set without cylinder
UEZ1340 CC 73	cylinder color
UEZ1340 TT 73	thumbturn
UEZ1340 BAD 73	privacy thumbturn

**round**

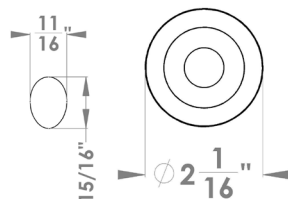
TER37 PRI 9139 73	Accurate privacy without cylinder
TER37 STORE 9195 73	Accurate storeroom/nitelatch
TER37 ENT 9167 73	Accurate entrance set without cylinder
TER37 ENT 9169 73	Accurate entrance set without cylinder
UEZ1332 CC 73	cylinder color
UEZ1332 TT 73	thumbturn
UEZ1332 BAD 73	privacy thumbturn

**specification details**

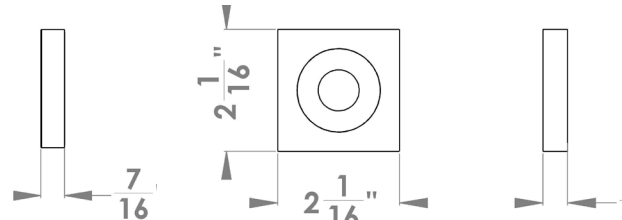
**lever**



**round rose**



**square rose**



Please note: Karcher Design products are designed and measured in metric. Imperial measurements are close approximations to the actual metric dimensions